

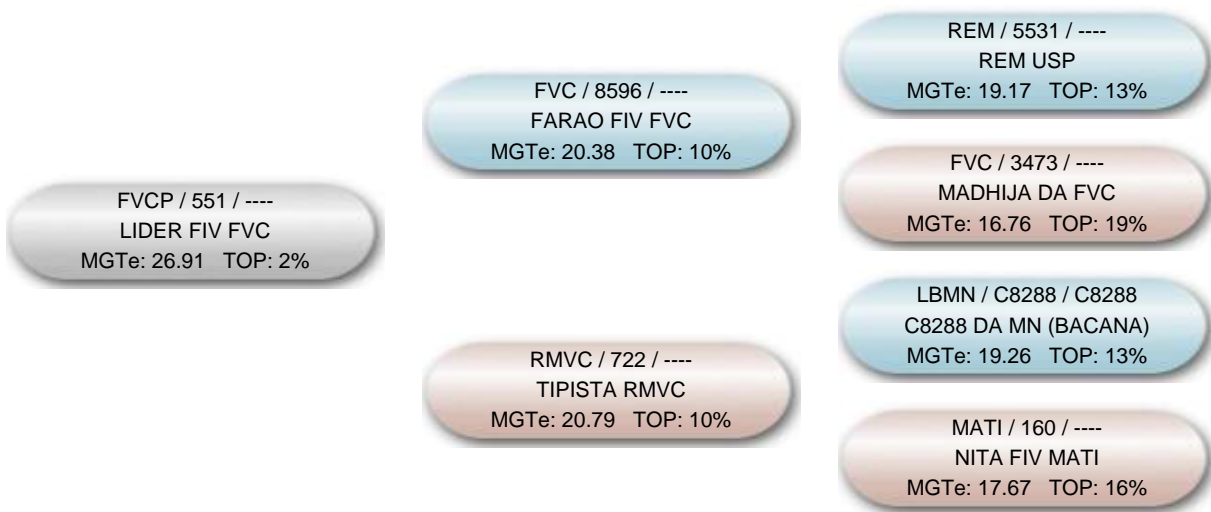
Nome do animal LIDER FIV FVC			Proprietário: 136 - Fazenda Vera Cruz / Jairo Machado Carneiro Filho Criador: 136 - Fazenda Vera Cruz / Jairo Machado Carneiro Filho		
Série FVCP	RGN 551	RGD	Raça Nelore	Categoria PO	Variedade Padrão
Central Araucária Genética Bovina			Reprodução Programada		
Sexo Macho	Situação Ativo	Dt. Nasc. 06/08/2016	MGTe 26.91 @76	TOP @ 2%	

DIPPG -1.01 @ 49 @ 8%	D3PG 86.43 @ 82 @ 5%	DIPMG 1.277 @ 61 @ 100%	MP120G 1.68 @ 51 @ 25%	MP210G 1.81 @ 50 @ 35%	MTP210G 9.48 @ 58 @ 6%	DSTAYG 93.20 @ 79 @ 0.5%	DPACG 10.43 @ 29 @ 3%	DPGG -1.05 @ 82 @ 9%
DPNG 0.43 @ 74 @ 49%	DP120G 7.54 @ 71 @ 5%	DP210G 15.34 @ 74 @ 2%	DP365G 28.67 @ 81 @ 2%	DP450G 30.21 @ 80 @ 2%	DPAVG 37.59 @ 39 @ 95%	DCARG* 0.048 @ 38 @ 71%	DIMSG* 0.252 @ 43 @ 92%	DPE365G 1.52 @ 73 @ 3%
DPE450G 1.79 @ 78 @ 2%	DAOLG* 2.25 @ 78 @ 12%	DACABG* 0.12 @ 76 @ 24%	DMARG -0.02 @ 61 @ 44%	DMACG 0.167 @ 9 @ 98%	DESG 73.65 @ 65 @ 15%	DPSG 74.52 @ 57 @ 9%	DMSG 74.77 @ 57 @ 6%	DALTG 1.84 @ 74 @ 89%
DFRAMEG 0.144 @ 70 @ 49%	MPNG 0.30 @ 52 @ 76%	DMOCHOG	MFPPG 47.22 @ 74 @ 65%	DFPPG 49.33 @ 78 @ 42%	MGTe_CR 28.23 @ 74 @ 1%	MGTe_RE 23.73 @ 79 @ 4%	MGTe_CO 4.73 @ 68 @ 11%	MGTe_F1 4.32 @ 69 @ 12%

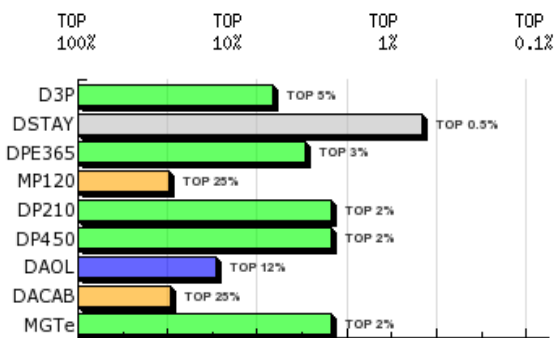
@: Acurácia @: TOP DEP G: DEP Genômica *: DEP com fenótipo incorporado Em destaque DEPs que compõe o MGTe

NF3P	NN120	NRN120	NFSTAY	NF120	NR120	NF210	NR210	NF450	NR450	NFUS	NRUS	NFSAMS
16	43	7	0	117	14	135	15	123	14	88	5	0

Genealogia



DEPs Gráficas



- Diamante - TOP 1%
- Esmeralda - TOP 5%
- Rubi - TOP 10%
- Safira - TOP 20%
- Topázio Imperial - TOP 30%
- TOP maiores 30%