

# 566HO1343 HIGHERRANSOM

## NOTMUCH -ET

Holstein 840003210341518 99% RHA-I \*TC \*TY \*TV \*TL \*TD

Born: April 23, 2020 aAa: 423156 DMS: 345/135

A2A2 Kappa-Casein: AB

### CDCB PTAs 8/23

**GTPI +2876** +753M +0.19% +83F +0.06% +41P 82% Rel.

Type +1.35 81% Rel. UDC +1.86 FLC +0.25

NM \$882 CM \$900 GM \$812 FE 202 FSAV 17 EFI 11.8%

GENOMIC DPR -0.4 PL +6.0 LIV +1.4 HLIV +1.0 SCS 2.63

Wellness Traits MAST 106 LAME 96 MET 110 RP 105

KET 107 DA 105 DWP\$® \$938 WT \$179

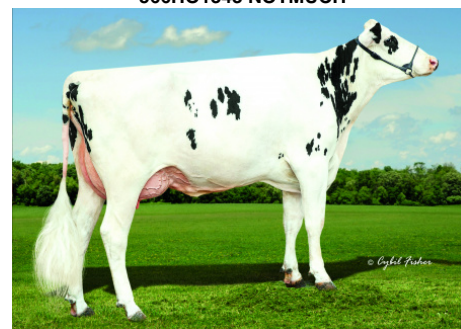
Calf Traits LIV 97 SCOURS 108 RES 104 CW \$28

Milking Speed 100 Milking Temperament 102

Calving Ease / OBS / Daughter CE: 1.9% 106 1.8%



566HO1343 NOTMUCH



566HO1343 NOTMUCH Dam:  
Higherransom Huey Not-ET "VG-86"

**Sire:** Silverridge V Einstein-ET

**Dam:** Higherransom Huey Not-ET "VG-86"  
2-03 3x 305d 24,240 4.8 1163 3.4 827

**MGS:** T-Spruce Frazzled Huey-ET

**MGD:** Siemers Abl Nation 27370-ET "EX-90" EX-92-MS  
3-03 3x 305d 34,340 4.0 1384 3.3 1147

**3rd Dam:** Green-Banks Rubicon 6535-ET

**4th Dam:** Coyne-Farms Jacey May-ET "VG-85"  
3-02 3x 319d 31,140 4.1 1274 3.3 1034  
Life: 1230d 100,320 4.4 4401 3.4 3369

**5th Dam:** Foxberry Stream Myra 619-ET "VG-86" GMD, DOM  
2-02 3x 365d 30,750 3.9 1204 3.0 935

**6th Dam:** Ms Heartbeat JM Maggie Mae "EX-92" 2E GMD, DOM  
2-11 2x 365d 37,070 5.1 1887 3.1 1136

**7th Dam:** Heartbeat Rudolph Maggie "EX-94" 3E GMD, DOM

	USDA	-2	-1	0	1	2
Stature	0.38T					
Strength	0.15S					
Body Depth	-0.35S					
Dairy Form	-0.11T					
Rump Angle	0.18S					
Rump Width	0.88W					
R Legs - Side View	-0.49S					
R Legs - Rear View	0.00S					
Foot Angle	0.43S					
Feet & Legs Score	0.40H					
Fore Attachment	1.84S					
Rear Udder Height	2.05H					
Rear Udder Width	2.17W					
Udder Cleft	1.27S					
Udder Depth	1.77S					
F Teat Placement	1.35C					
R Teat Placement	1.55C					
Teat Length	-0.87S					



International Protein Sires

WWW.IPSSIRES.COM Facebook: International Protein Sires  
608-524-8086 E-mail: contact@ipsires.com