

566HO1352 LARS-ACRES L

SHOWBIZ -ET

Very Good-86

Holstein 840003219743008 99% RHA-I *TC *TY *TV *TL *TD

Born: December 23, 2020 aAa: 462513 DMS: 561/126

A1A2 Kappa-Casein: AB

CDCB PTAs 8/23

GTPI +2859 +684M +0.20% +85F +0.06% +39P 81% Rel.

Type +1.46 80% Rel. UDC +1.54 FLC +1.40

NM \$851 CM \$865 GM \$859 FE 224 FSAV 220 EFI 10.9%

GENOMIC DPR +1.0 PL +4.5 LIV +0.5 HLIV +0.7 SCS 2.81

Wellness Traits MAST 103 LAME 102 MET 103 RP 96

KET 106 DA 103 DWP\$® \$969 WT \$126

Calf Traits LIV 94 SCOURS 100 RES 105 CW -\$12

Milking Speed 99 Milking Temperament 100

Calving Ease / OBS / Daughter CE: 2.3% GEN 2.3%

Sire: Cookiecutter Logistics-ET

Dam: Lars-Acres Fut Showme-ET "GP-83" VG-MS
2-02 3x 365d 37,370 3.4 1276 3.1 1172

MGS: Melarry Frazzled Future-ET

MGD: S-S-I LA Manton 19755-ET "VG-89" EX-MS
3-02 3x 365d 42,550 4.2 1805 3.2 1341

3rd Dam: S-S-I Spark 9185 11449-ET "VG-88"
3-01 3x 360d 49,560 3.1 1541 3.2 1563

4th Dam: S-S-I Platinm Sofia 9185-ET
2-01 3x 314d 28,780 3.7 1077 3.1 906

5th Dam: S-S-I Mogul Sasha 7970-ET "VG-85"
2-03 3x 305d 34,720 3.0 1040 3.0 1028

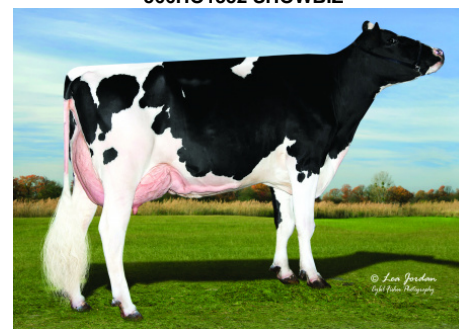
6th Dam: Ammon-Peachy Super 7069-ET

7th Dam: Pine-Tree Martha Sheen-ET "VG-86" DOM

8th Dam: Pine-Tree Missy Martha-ET "VG-86" GMD, DOM



566HO1352 SHOWBIZ



566HO1352 SHOWBIZ Dam:
Lars-Acres Fut Showme-ET "GP-83" VG-MS



566HO1352 SHOWBIZ Grandam:
S-S-I Manton 19755-ET "VG-88"

	USDA	-2	-1	0	1	2
Stature	-0.35S			█		
Strength	-0.56F		█			
Body Depth	-0.72S		█			
Dairy Form	0.79O			█		
Rump Angle	-1.03H		█			
Rump Width	-0.85N		█			
R Legs - Side View	0.75C			█		
R Legs - Rear View	1.01S			█		
Foot Angle	0.99S			█		
Feet & Legs Score	1.32H			█		
Fore Attachment	1.65S			█		
Rear Udder Height	2.19H			█	█	
Rear Udder Width	1.91W			█	█	
Udder Cleft	0.12S			█		
Udder Depth	0.84S			█		
F Teat Placement	-0.36W		█			
R Teat Placement	-0.44W		█			
Teat Length	0.24L			█		

566HO1352 SHOWBIZ's Pedigree:
Includes no Modesty,
Montross, Jedi, Duke or
Achiever



WWW.IPSSIRES.COM Facebook: International Protein Sires
608-524-8086 E-mail: contact@ipssires.com